

OPERATIONAL ASSURANCE FOR CRITICAL DEVICES

Data Sheet

Voyance
by nyansa



Voyance operational assurance for critical devices delivers simple summarized analytics of your most important networked clients.

Specifically tailored for non-IT line of business staff, the Voyance critical asset dashboard offers comprehensive, at-a-glance insight into the performance, security affecting devices essential to your business – prioritizing problematic clients with expert root cause analysis.

Now IT and LoBs are better aligned with a single source of truth to quickly find and fix revenue-impacting device issues.

UNIQUE FEATURES

- Completely self service
- Specifically tailored for line of business staff
- Incidents / advisories by priority level and category
- Combines security and performance analytics
- High level device / infrastructure overview
- Auto priority of most problematic devices
- Cross stack root cause analysis
- Plain English description of device problems
- At-a-glance inventory of all critical devices
- Comprehensive listing of problematic clients
- Detailed drill down into individual devices or groups

QUANTIFIABLE BENEFITS

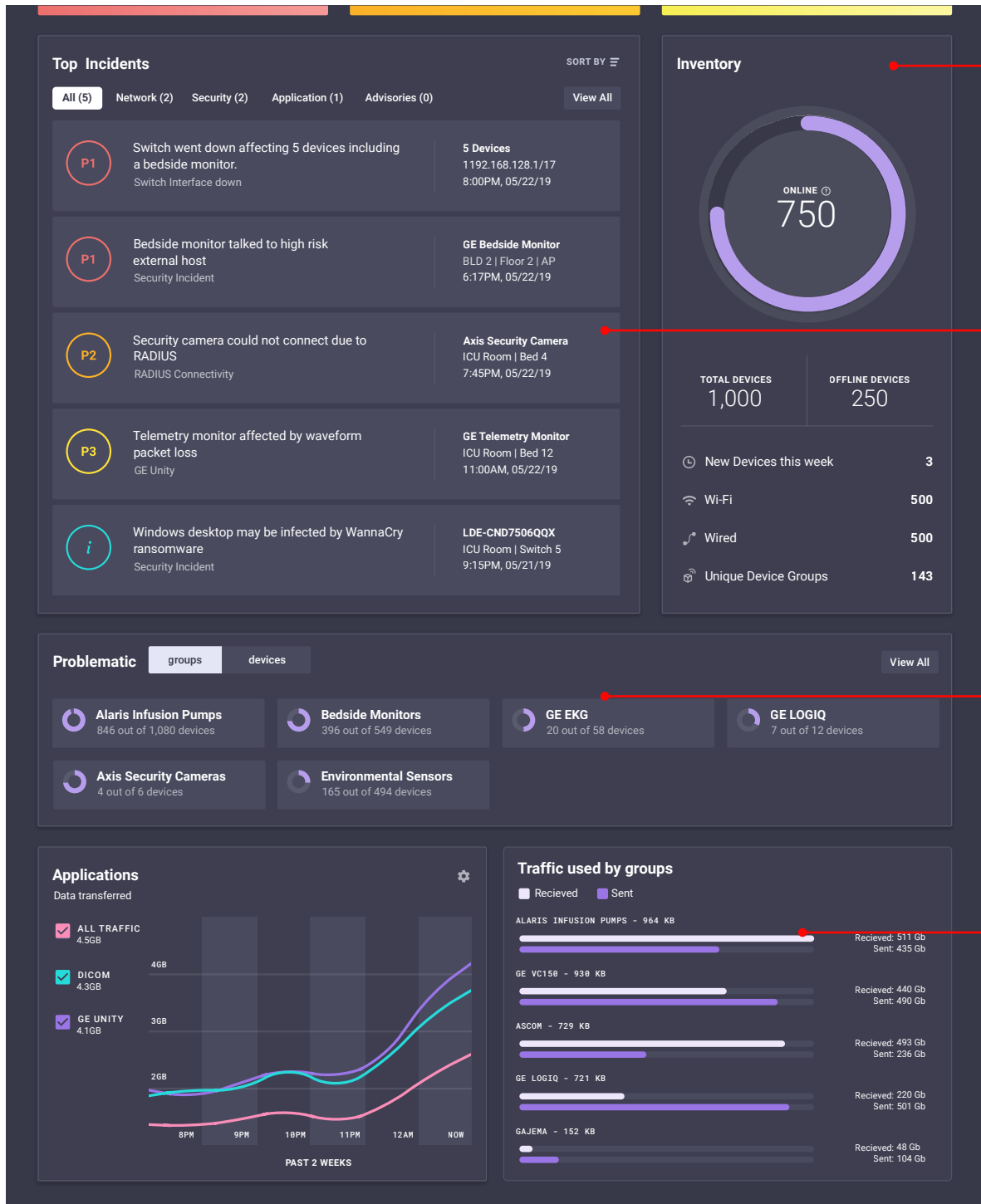
- Efficient and proactive incident response
- Reduced time to find and fix critical device problems
- Increased productivity triaging IoT issues
- Better alignment between IT and LoB staff
- Intuitive analytics requiring little or no IT expertise
- Single location for all IoT / critical device monitoring
- Improve preventative maintenance efficiency
- Remote troubleshooting

LINE OF BUSINESS USE CASES

- Higher Education facilities staff
- Biomedical professionals
- Manufacturing production line operations
- Warehouse Inventory management personnel
- Retail operations staff

OPERATIONAL ASSURANCE FOR CRITICAL DEVICES

Data Sheet



At-a-glance summary of critical device inventory

Top critical device incidents prioritized

Problematic critical devices by category

Application detail by traffic type and group